

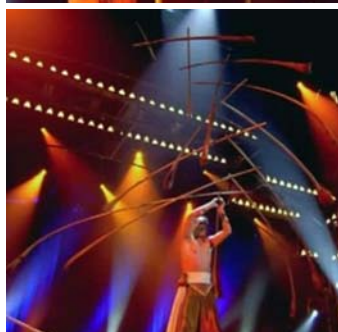
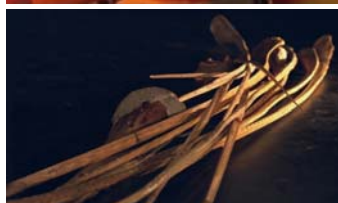
BALANCE

Equilibre - Souffle - Moment de grâce

Avec « Balance », Médir défie les lois de l'apesanteur et de l'équilibre. Au sol, quelques « branches », petites, moyennes et grandes. Médir prend la plus petite qu'il soupèse, puis s'empare d'une autre pièce sur laquelle il la pose. Ainsi de suite. Retenant son souffle comme nous retenons le nôtre. L'édifice « balance », doucement et forme une architecture incroyable à laquelle nos regards sont suspendus. C'est majestueux! Puis, du pied, il soulève la dernière pièce, la plus grande, qu'il dresse à la verticale et sur laquelle il pose son œuvre éphémère, en suspension, au ralenti. L'étrange squelette est stable dans son instabilité aérienne. Médir, s'éloigne, toise la structure, sourit et soudain, du bout du doigt fait tomber la petite pièce du début et... c'est la chute inévitable. Les pièces de bois rejoignent le sol, là où elles se trouvaient au début. MAGIQUE!!!

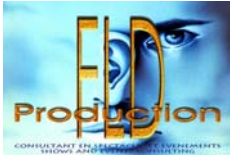
FLD Production
présente

MÉDIR - BALANCE



FLD Production

La Synergie des talents pour des événements artistiques de haut niveau - The synergy of talents for high level artistic events
Mobile : +33 608 228 932 - Site web : <http://www.fldproduction.fr> - mail : contact@fldproduction.fr & dancelme@gmail.com



BALANCE

Equilibre - Souffle - Moment de grâce



FLD Production
présente

MIEDIR - BALANCE

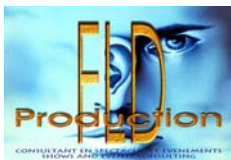
A prévoir pour chaque prestation :

- Voyages A/R au départ de Zurich + frais de visas si nécessaire + fret du matériel.
- Hébergement en single avec petit déjeuner et restauration sur la période,
- Loge avec miroir, table, chaise, portants avec cintres, prise électrique, soft drink, eau, thé, café, gâteaux secs et fruits, un point d'eau et des toilettes à proximité.
- Scène, lumière et sonorisation selon fiche technique qui sera fournie



FLD Production

La Synergie des talents pour des événements artistiques de haut niveau - The synergy of talents for high level artistic events
Mobile : +33 608 228 932 - Site web : <http://www.fldproduction.fr> - mail : contact@fldproduction.fr & dancelme@gmail.com



BALANCE

Equilibre - Souffle - Moment de grâce

Balance Requirements

A Tranquil number that focuses on mediation that brings poise together with harmony.

This Act is not only unique but also fragile. For this piece to be successful there are a number of requirements necessary.

If the requirements are slightly not exact than direct contact to the Artist is a must.

Duration : ca 15 Min.

Stage : Flat, hard-leveled surface

Space Requirements : ideal is 6 x 6m / 20 x 20ft with unobstructed view of full Artist (*Head to toe*)

The Piece is also possible to perform on a Runway ab 1 x 4m/ 3.5 x 13ft

Height from Stage to ceiling 2.7m/ 9ft

The necessary airspace for the construction is 6 x 6m / 20 x 20ft (*noting that the construction of the piece could be overhead the audience*)

If the stage is not elevated at 1m/3 ft the audiences view of the piece will be slightly impaired.

If the stage can not be elevated at 1m/3ft, the Artist should be contacted and notified!

Attention : The Act is very sensitive to wind so attention must be paid to doors shut and Air controlled/ operating air units be switched off or at a low frequency not to disrupt the construction

Dressing Room :

The artist is in need of a dressing room with mirror, sink and small catering

Technical Advice :

The preparation of the act on stage is about 1 hour.

In this period following preparations need to be done :

- Light rehearsal , lights are already installed (view technical rider)
 - setting of light cues . favorable the artist gets provided with a microphone for the communication with the technician
 - Sound check. With live vocals; Microphon
 - Setting palmripps (13)
- Two stage hands required

- announcement and transition to the act

- Full rehearsal of the act with all crew members (*empty stage, dimmed lights, quiet atmosphere, no wind or AC*) duration about 15 Min

General Requirements

- Showtime postponement (longer then 10min) must be announced at least 20 min in advance.
 - Announcement of the act and artist has to be discussed with the artist in advance
 - The artist may bring a technical support who will assist the local crew
 - Minimum requirement of lights : 6 x 1000Watt stagelights. 2 from the back/above. 4 front or up/front. Spotlight with a darkblue filter on stage / front right (*audience view*).
- Controllable in at least 4 different channels. In case of live vocal, one more spotlight and an additional channel needed.

View technical rider.

- Catering timing will be discussed with the artist by time of arrival

- If the artist travels by car : the organizer is committed to find a suitable parking spot close to the event.

Height of Vehicle 2.40m. (*as well as for the Hotel*)

Deviations are to be discussed with the Artist in advance.

Music :

CD : hall/theatre suitable amplifier

Live vocals: micro and amplifier

Lights : 2-3 profile headlights from behind, preferable as high as possible, so the audience does not get dazzled by the lights 1 halogen-lamp at least 1000 watt with dark blue filter from front edge of the stage right (from audience view) 3-4 profile-headlights from the top front or side (about 6 m circle)

FLD Production
présente

MEDIR - BALANCE

FLD Production

La Synergie des talents pour des événements artistiques de haut niveau - The synergy of talents for high level artistic events
Mobile : +33 608 228 932 - Site web : <http://www.fldproduction.fr> - mail : contact@fldproduction.fr & dancelme@gmail.com